

# DISCOVER YOUR HIDDEN COSTS

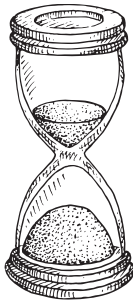
You've built your business on your commitment to using high quality ingredients, and your customers can taste the difference. While certain ingredients require your time and attention, the cheese that you use on your signature pie or sandwich doesn't have to be one of them! See the example below on how slicing or shredding your own cheese might have some hidden costs that may be cutting into your profits.

## TOTAL SHREDDING COST



### COST OF PRODUCT WASTE

$$= 0.56 \text{ lbs.} \times \$3.00/\text{lb.}^* = \$1.68$$



### COST OF TIME TO SHRED

$$= 24 \text{ min.} \times \$10.00/\text{hour}^{**} = \$4.00$$



### COST OF TIME TO CLEAN SHREDDER

$$= 32 \text{ min.} \times \$10.00/\text{hour}^{**} = \$5.33$$

### TOTAL COST

$$= \$11.01/\text{case}$$

$$= \$0.20/\text{lb.}$$



\*Estimated operator cost of 1 lb. of Grande Whole Milk Mozzarella Loaf is \$3.00/lb.

\*\*Estimated hourly wage of pizzeria employee is \$10.00/hour

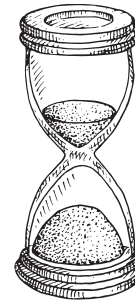
\*\*\*Case of Mozzarella is about 55lbs. // Source: Grande Shredding Study, 2019

## TOTAL SLICING COST



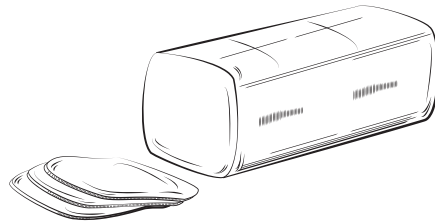
### COST OF PRODUCT WASTE

$$= 3.4 \text{ lbs.} \times \$3.00/\text{lb.}^* = \$10.20$$



### COST OF TIME TO SLICE

$$= 44 \text{ min.} \times \$10.00/\text{hour}^{**} = \$7.33$$



### COST OF TIME TO CLEAN SLICER

$$= 26 \text{ min.} \times \$10.00/\text{hour}^{**} = \$4.33$$

### TOTAL COST

$$= \$21.86/\text{case}$$

$$= \$0.40/\text{lb.}$$



\*Estimated operator cost of 1 lb. of Grande Whole Milk Mozzarella Loaf is \$3.00/lb.

\*\*Estimated hourly wage of pizzeria employee is \$10.00/hour

\*\*\*Case of Mozzarella is about 55lbs. // Source: Grande Slicing Study, 2017

TO CALCULATE THE DIFFERENCE BETWEEN YOUR LOAF  
AND SHRED/SLICED TOTAL COSTS, SCAN HERE

